

Risk Assessment information for all activities by individuals and groups at Elysian

Address:

**Elysian Animal Assisted Therapy & Learning CIC
Janche Stables,
Andlers Ash Road,
Liss
Hampshire
GU33 7LU**

Office mobile 07944 875 155

In the event of an emergency call 999.

Nearest hospital: Frimley Park Hospital Portsmouth Rd, Frimley,
Camberley GU16 7UJ

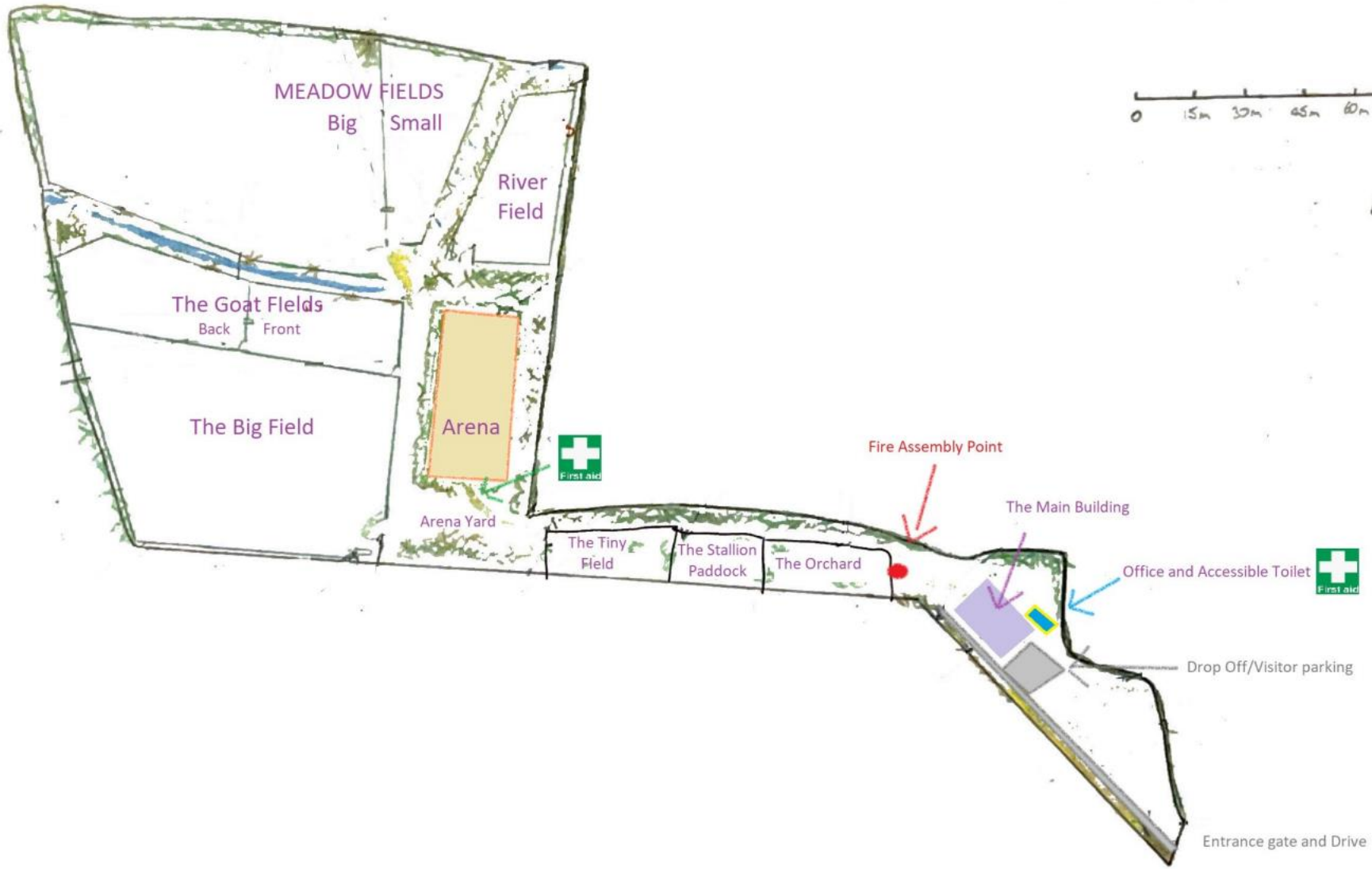
First Aid kits are provided in the office and in the 1-1/first aid room.

The Site First Aiders are: Demi Watts, Dene Williams

Activities at Elysian, Liss

MAP OF SITE

SCALE 1:1500



ACTIVITY/LOCATION	HAZARDS	THOSE AT RISK	RISK LEVEL	ACTION - RISK REDUCTION MEASURES	RISK
<p>Contact with animals/Farm environment</p>	<p>Infection and disease from contact with animals</p>	<p>All, especially children and pregnant women</p>	<p>H</p>	<p>Children and adults must wash and dry hands using soap and water and paper towels after contact with animals, before eating and when leaving the farm. School staff/carers must supervise children's handwashing. Open wounds should be covered with a waterproof dressing. Handwashing facilities available on the farm. Animal faeces regularly swept off paths and animals kept in enclosures Pregnant women should not come into contact with sheep at lambing time. For more information about specific risks see: http://www.face-online.org.uk/face-news/preventing-or-controlling-ill-health-from-animal-contact-at-visitor-attractions http://www.cdc.gov/parasites/toxoplasmosis/ http://www.hse.gov.uk/campaigns/farmsafe/ecoli.htm</p>	<p>L</p>
	<p>Injury from biting, kicking, trampling</p>	<p>All</p>	<p>M</p>	<p>Animals kept in fenced paddocks or enclosures and are handled with the support of staff. Children & Young People and all Visitors are alerted if the animals will be out of their areas. Visitors are not permitted to feed animals except on guided sessions, in sessions or tours with staff. staff to make individuals and groups aware of safe behaviour around the farm. Where a person is upset or angry, staff need to consider the potential impact on the animal and the possible increased risk of unwanted behaviour from the animal, this may include ensuring the animal is contained away from the child or young person.</p>	<p>L</p>
	<p>Allergic reaction to animal or bedding</p>	<p>People with asthma and other allergies</p>	<p>L</p>	<p>Staff/carers are responsible for supporting individuals within their arranged groups or sessions, and ensuring they are aware of the children and young people's completed Health and Safety information as to not expose anyone to allergens or reduce exposure accordingly. Staff need to ensure any visitors or group discuss with staff any known allergies prior to the visit, or on arrival before undertaking any activities. Entry into more enclosed areas such as hay barn and animal enclosures is only with permission and under the instruction of staff and may not be suitable for children with allergies such as asthma.</p>	<p>L</p>

Compost/Manure Heaps	Infections	All	M	No contact with manure heaps or compost heaps (except for arranged activities under the direction of staff, who will be able to guide on appropriate safety measures.	L
Access to Farm	Road, group members leaving the farm	Children	L	Visitors, children, young people and parents access farm via farm drive and into visitor's car park. Staff access the farm through the second farm entrance into a staff car park. Visiting cars to drive under 15mph on farm drive. There are signs and CCTV to monitor this. Staff to address any drivers seen to not adhere to the speed limits, or not being considerate and courteous in the car park. Children and young people are often anxious and to ensure safety we ask that all users of the car park use the car park exercising caution and consideration at all times. Visiting school groups to bring appropriate adult child ratio.	L
Walking on the Farm	Injury from slipping, tripping and falling; uneven cobbles and steps, wet ground	All group members	H	Children, young people and adults to wear suitable clothing and footwear. Farm pathways and yard regularly swept of debris. Due to the uneven nature of some of the ground surfaces, children should not run at the farm and should be supervised by staff/carers. Children are not to be unsupervised, and when young people, as part of their independence pathway are allowed to walk around farm areas unescorted, this is done with staff's overall supervision (ie planned, with full awareness of location and timings). Signs displayed to make all walkers aware of uneven ground, and staff to ensure all CYP and visitors are reminded of the irregular surfaces and the need for appropriate footwear and clothing at all times.	M
Farm Buildings/ Rooms	Workshops, feed room, cabin room, hay barns – injury from tools, or dangerous substances	All	M	All buildings are kept locked when not used in sessions and supervised by the staff running the session. Buildings to be tidied and all items to be cleared away after each use. Tools to be kept in locked away tools' storage, and all substances that may pose a risk such as chemicals to be kept in the COSHH cupboard inside the 1-1 Room Metal fencing closed and covering hazardous machinery 'No entry' sign displayed and doors locked for every storage area on the farm.	L
	Kitchen – scalding from hot water	All	L	Individuals only to enter the kitchen with permission and young people in session to enter with staff only. Staff supervise all kitchen and cooking with the young people, including guiding the use of all appliances	L

